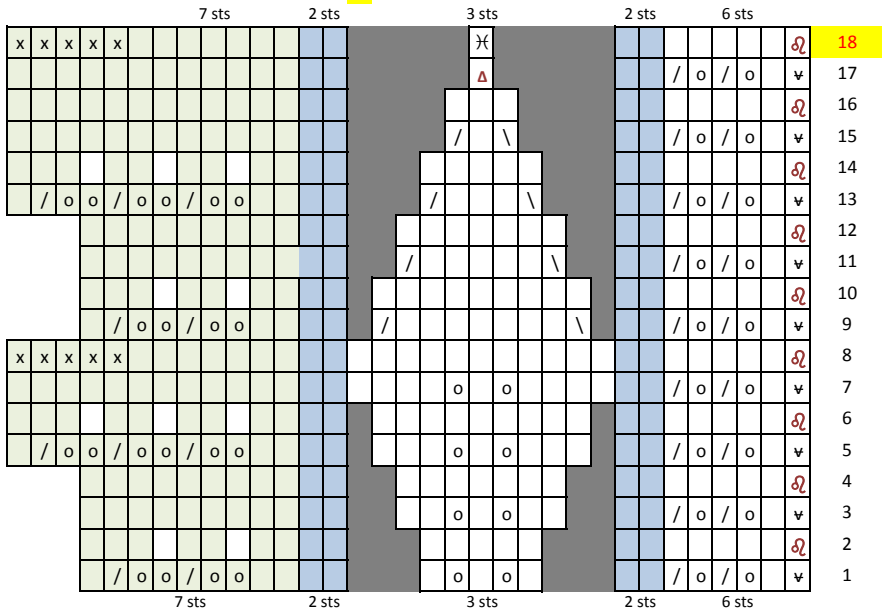


## Apple Leaf Lace #2

Based on the Apple Leaf Lace from knitting-and.com - with modifications to the number of cast on stitches; and the ending of the leaf, to make a nicer transition between the leaves. The joining and edging elements could easily be substituted within the 18 row repeat (9 joins).

### Stitch Key

|   |                                |   |  |
|---|--------------------------------|---|--|
| o | yarn over                      |   | Knit on r/s; purl on w/s (stocking stitch)         |
| / | K2tog                          |   | Knit on r/s; knit on w/s (garter stitch)           |
| \ | SSK                            |   | Purl on r/s; knit on w/s (reverse stocking stitch) |
| Δ | S1, k2tog, pss0                |   | No stitch  |
| ⌘ | K1tbl (or join to body)        | ⌘ | p1 yo p1 into one stitch (double increase)         |
| ∇ | S1 purlwise with yarn in front | x | bind off   |
|   |                                | * | pay attention to this row - change in sequence     |



Cast on 20 stitches - note sequence if you wish to substitute any element.

