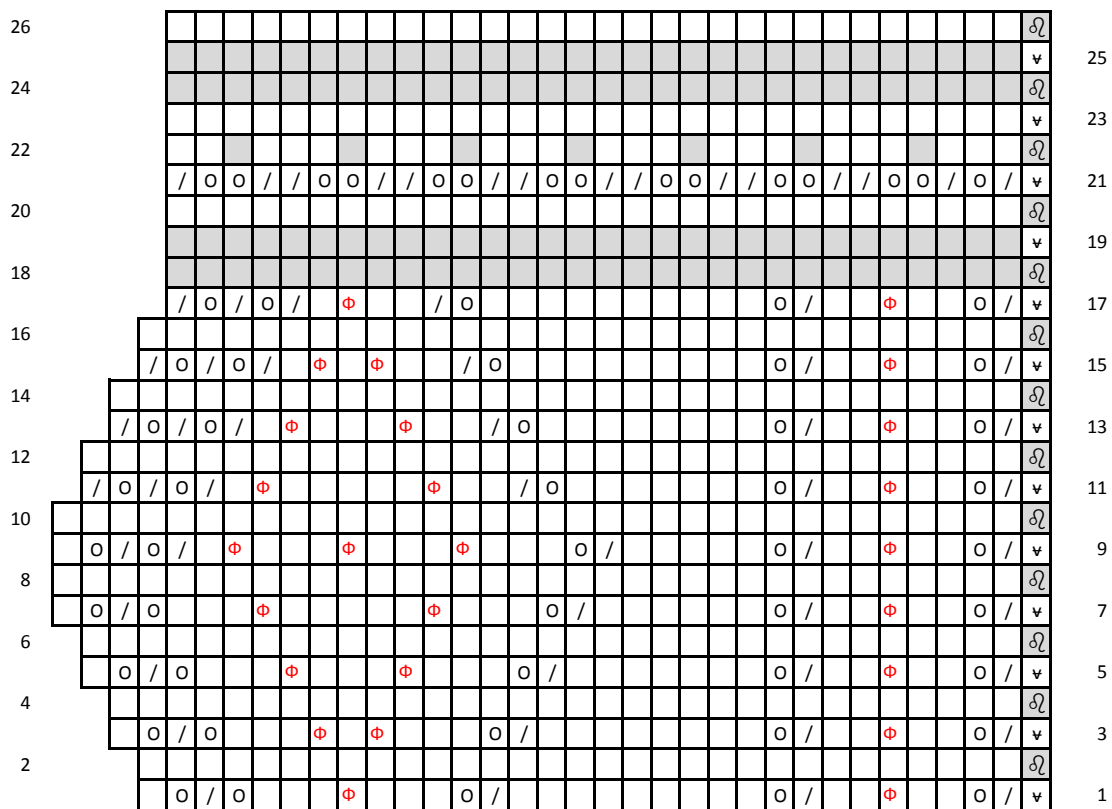


Fir Cone Lace Border

From Weldon's, 1895.

Option 2: Lighter bead placement

26 beads per repeat.



Cast on 32 stitches

- | | | | |
|---|---|--------------------------------------|--|
| <input type="checkbox"/> | Knit on RS, purl on WS | <input type="checkbox" value="o"/> | Yarn over |
| <input type="checkbox" value="grey"/> | Knit on WS, purl on RS | <input type="checkbox" value="/"/> | Knit 2 together |
| <input type="checkbox" value="v"/> | Slip purlwise with yarn in front | <input type="checkbox" value="phi"/> | Place bead by hooking over bead with a crochet hook then knitting the stitch as usual. |
| <input type="checkbox" value="border"/> | Knit border stitch TOGETHER with 1 shawl body stitch through back of loop | | |

